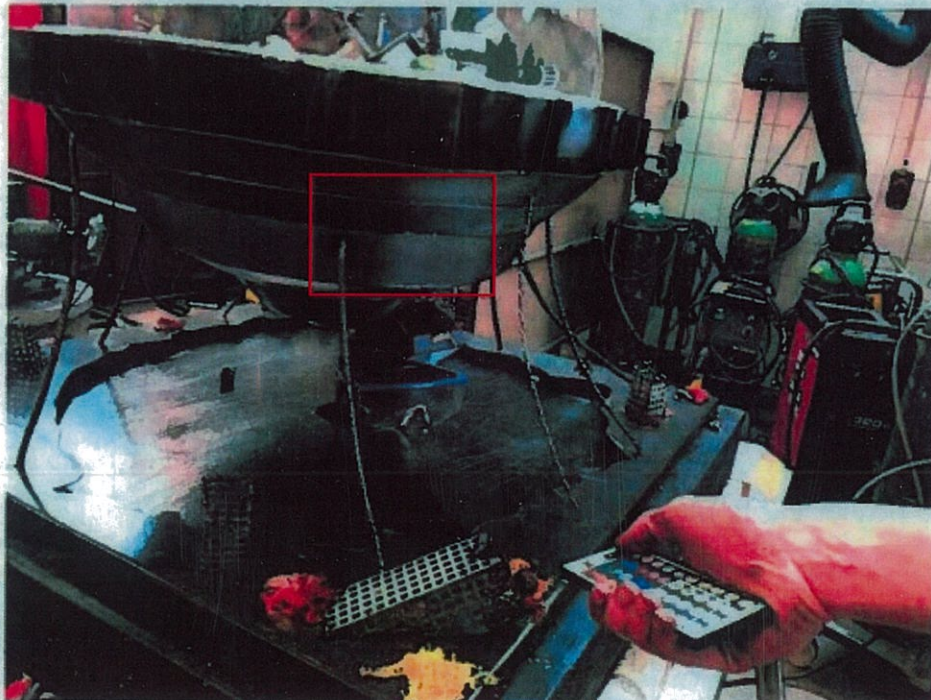
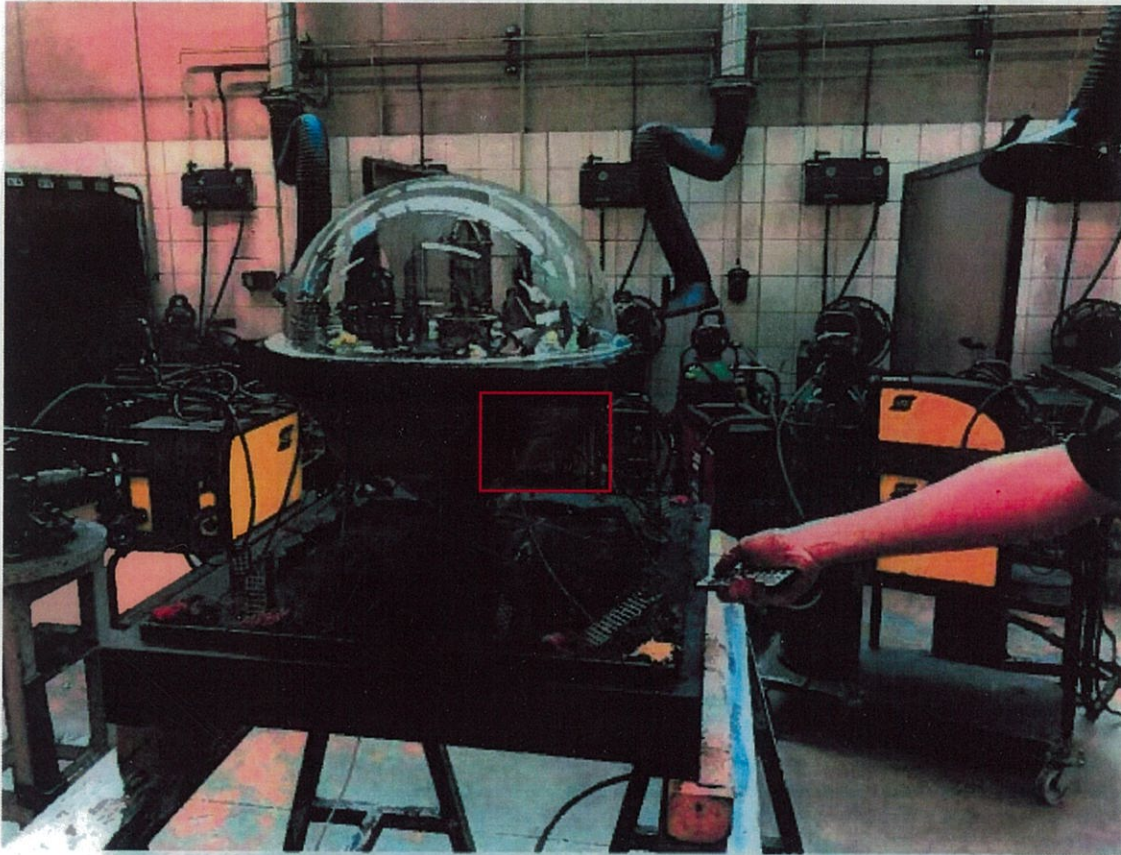
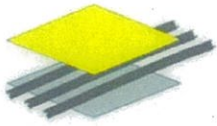


Additional information:

If the city LEDs are off, a remote control is available to turn them on and change the colors (be sure to use the remote control pointing towards the area indicated in the photo below)





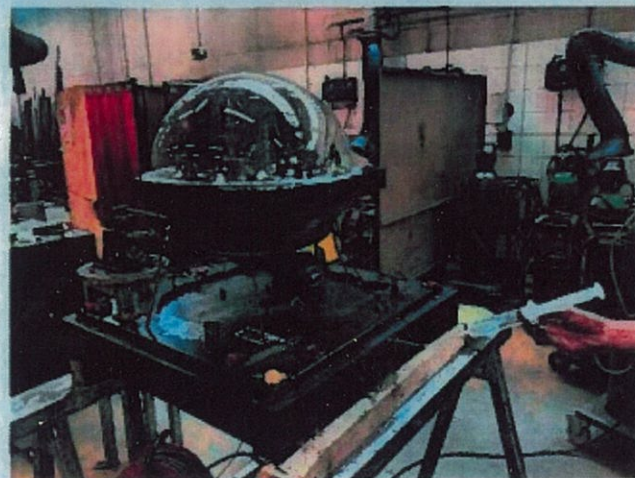
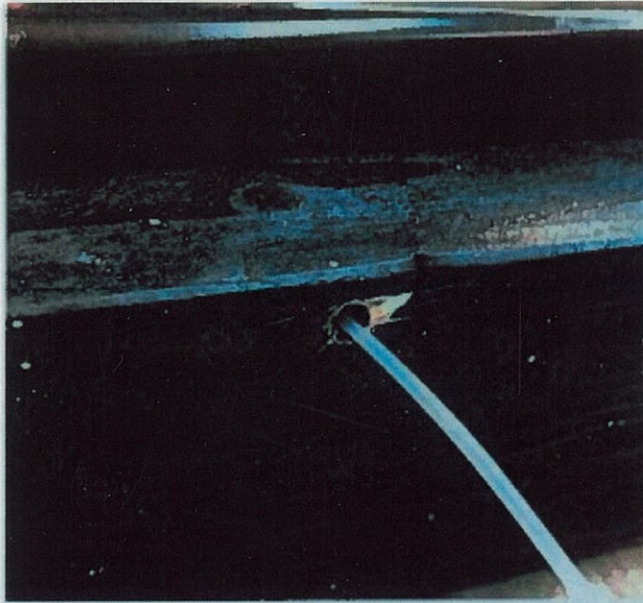
**BTP CFA
DES SAVOIE**

Le réseau de l'apprentissage BTP

Start up of Orbite-terre

1st step :

- With the help of the syringe filled to its maximum capacity the tank, 60ml, inject water through the supply hole. (see pictures below)



2nd step :

- Plug the power cable into the power supply

