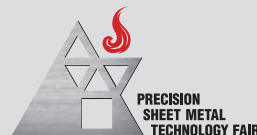


The 35th Precision Sheet Metal Technology Fair

Guidelines for application



THE PRECISION SHEET METAL TECHNOLOGY FAIR



The 34th Precision
Sheet Metal Technology Fair
Minister of Economy, Trade & Industry Award
Award Winner



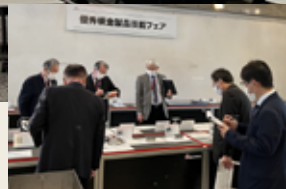
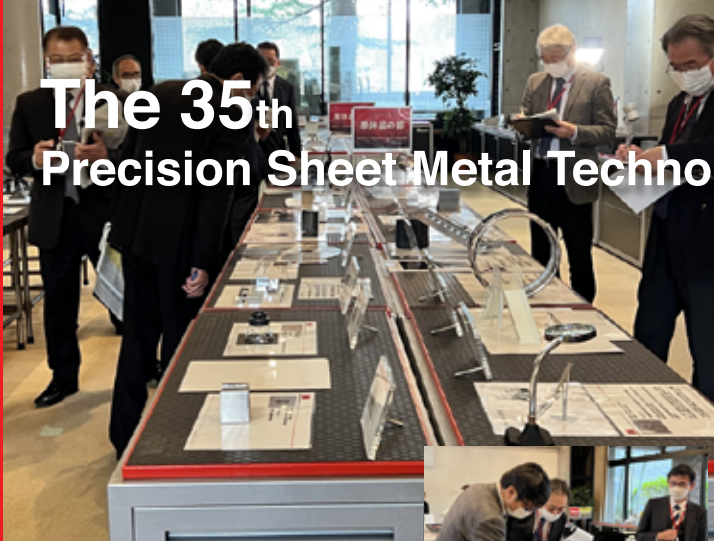
The 34th Precision
Sheet Metal Technology Fair
Minister of Health,
Labour & Welfare Award
Award Winner

Sponsor:
AMADA SCHOOL OF VOCATIONAL
TRAINING CORPORATION

Cooperation:
The Japan Society for Technology of Plasticity

Support:
Ministry of Health, Labour and Welfare
Ministry of Economy, Trade and Industry
Kanagawa Prefectural Government
Japan Vocational Ability Development Association
The Nikkan Kogyo Shimbun, Ltd. (Daily Industrial News)
THE AMADA FOUNDATION
Japan's Local Sheet Metal Associations
AMADA CO., LTD.

The 35th Precision Sheet Metal Technology Fair



Greetings

We would like to thank all participants and partners of the Technology Fair for further development of the sheet metal industry. The Precision Sheet Metal Technology Fair counts 35th this year. The fair has been held every year since 1989 in hopes of improving and exchanging technologies amongst the industry, by spotlighting the fabricating technologies that are concealed from the consumers' eyes, the crown of fabricating technology and know-how.

The Fair now attracts many entries from around the world.

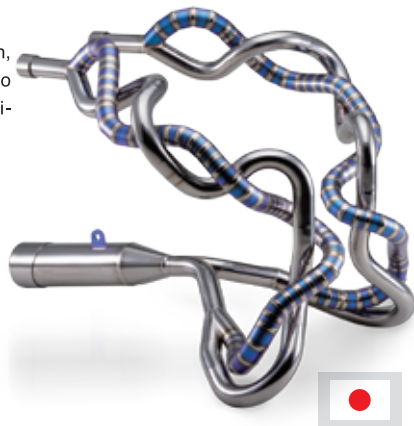
The Precision Sheet Metal Technology Fair is a "Ceremony of Technology", and we are eagerly awaiting your entry.

Katsuhide Ito, Chairman

AMADA SCHOOL OF VOCATIONAL TRAINING CORPORATION

Awarded works from the 34th Fair

The award of Minister of Health, Labour & Welfare is to be given to the components with high technical skill.



Minister of Health,
Labour & Welfare Award

Shinba Iron Works Corporation

Titanium exhaust system

Shizuoka Pref. Japan

The award of Minister of Economy, Trade & Industry is to be given to the components with improvement of production process.



Minister of Economy,
Trade & Industry Award

TANABE METAL TEC

Savonius type wind mill

Fukuoka Pref. Japan



Sheet metal parts
Technical Award



U.S.A.

SWEN Products Inc

Metal Wind Spinner



Sheet metal
assemble parts
AMADA Award



Indonesia

**PT. UMEDA FACTORY
INDONESIA**

SARON



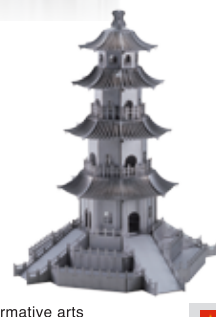
Formative arts
fabrication
AMADA Award



Italy

VIBEL GROUP SRL

"LA MANO DEL DIABLO"



Formative arts
fabrication
AMADA Award



China

**FangYuan Industry
(shanghai) Co.,Ltd**

Pagoda

Guidelines for application

Eligibility Requirements:

■ Company

As a general rule, the entry product is to be made by a company engaged in precision sheet metal / sheetmetal working business, and uses sheet metal working / machines, in domestic and overseas.

■ Students

Students who are studying metal processing at high school, technical college, university or vocational school are applicable to "student fabrication".

*Products created by teachers, professors or trainers will be classified as reference.

When & Where:

1.The entries are accepted from

May through October 2022.

2.The entries should be handed to an AMADA employee or sent to the local AMADA office.

How to Enter:

You can enter directly to entry form.

<https://www.amada.co.jp/fair/eng/info/>

Please print the entry form filled in, and send it along with the product. And you can download an entry form from website. Please visit the website to fill in more detail.

The following questions have high score points at selection process: **"the process you would like to appeal" and "illustrated explanation of fabricating know-how"**. Please fill them out in detail, with accuracy.

*In case of welding fabrication, please attach photos before finishing.

Terms for Application

1.The product must symbolize today's sheet metal fabricating technology, and must have been processed by sheet metal working machines.

2.The applicants are responsible for verifying with your client if you can display the product.

3.If you wish to exhibit the product under the copyrighted material of a third party (character, etc.), patent rights, design rights, trademark rights or other intellectual property rights, you must attach the certification of receiving proper license, consent from the right holder with the product.

4.Please do not mark the part with a company logo.

5.Exhibition category:

The fair applies following 5 categories .
Refer to the samples below.

1) Sheet metal parts(Single sheet fabrication)

2) Sheet metal assemble parts (Assembly of parts)

3) Welding fabrication (Welding technology & skills)

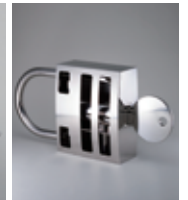
4) Formative arts fabrication (Idea and impression of formative arts)

Category Example

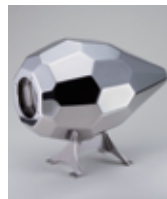
1) Sheet metal parts
(Single sheet fabrication)



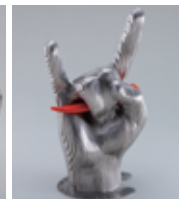
2) Sheet metal assemble parts
(Assembly of parts)



3) Welding fabrication
(Welding technology & skills)



4) Formative arts fabrication
(Idea and impression of formative arts)

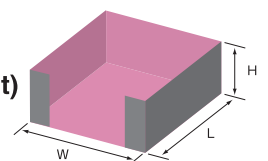


*The Judging Committee may change the above categories.

5) Students' fabrication (Fabricated by students)

*Products made by students who are studying about metal processing at high school, technical college, university or vocational school

6.Work piece size should be within
1,500mm in the total outside dimensions (length+width+height) and must not exceed 600mm in each dimension.



Please contact the Precision Sheet Metal Technology Fair office if your work exceeds this size limit. Points may be deducted if your part is very large.

7.Basically, the entered product will **not be returned**.
If you wish the part to be returned, please contact us.

8.The entries will be on display at Amada HQ in Japan from November 2022 through October 2023.

*The entries might be displayed in a private show or public show if the applicant accepts it.

***Others: By entering any part in this competition, the applicants agree to be bound by all conditions of this Fair.**

Selection Process

1. All entries will be judged according to the criteria as below for each category:
 - 1) Does the entry provide hints or ideas for fabricating technologies/ fabricating know-how?
 - 2) Does the entry use advanced or new technology based on today's sheet metal fabricating technology?
 - 3) High quality and high precision work-pieces utilized by advanced and experienced skills and methods.
2. The entries will be judged in two phases:
 - 1) Initial Selection
All entries will be exhibited at the Amada HQ from November 2022 through January 2023, to be voted online and by visitors to Amada.
 - 2) Second Selection
The nominated entries from the initial selection (one product per category for each company) will be evaluated by the Judging Committee which is composed of academic experts and sponsors. Each award winner will be determined based on the number of votes acquired.

Announcement of Winners

The winners of each award will be announced at a ceremony in March 2023.

Award

《Awards Judged beyond Exhibition Category》

- Minister of Health, Labour and Welfare Award
- Minister of Economy, Trade & Industry Award
- Kanagawa Prefectural Governor's Award
- Japan Vocational Ability Development Association Chairman's Award
- The Nikkan Kogyo Shimbun Award
- The Japan Society for Technology of Plasticity President's Award
- Overseas Best Award
- Judging Committee's Special Award
- Amada Award
- Special Award etc.

《Awards Judged by Category》

- Grand Prize
- Technical Award

Privacy policy

1. For the purpose of using personal information

Personal information of applicants to the Fair may be used only for Fair purposes, including placement in printed materials on sponsorship, website posting, announcement of competition results or public relations activities deemed necessary to perform the Fair. The same applies to award-winning pieces of work. This should be agreed to by applicants in advance.

2. For information of submissions / applying organization

All the information will be widely published in web sites, newspapers, magazines and lectures of seminar, etc.

3. Disclosure of information to third parties

Personal information on applicants is to be used for the above purposes and will not be disclosed to any third party without permission except as may be required by law.

Please note that the event contents may change depending on the novel corona virus infection status. Please confirm the details with our administration office or on our website.

AMADA SCHOOL OF VOCATIONAL TRAINING CORPORATION

e-mail:sheetmetal-fair@amada.co.jp

www.amada.co.jp/fair